

# ELA & Reading 8

"I can shake off everything as I write,  
my sorrows disappear, my courage is  
reborn."

—Anne Frank

## Teacher Info

*Ms. Clayton*

E-mail: [cclayton@jsdtracy.com](mailto:cclayton@jsdtracy.com)

Phone: 209.835.3053 Ext. 1105

## WELCOME...

to your English class! Be prepared for reading and writing every day! There is much to accomplish this year, and I am confident that we will have fun in the process! Just remember to be present and do your best!

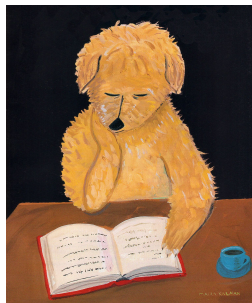
## Expectation

### Classroom Behavior

- ❖ Be on time!
- ❖ Be prepared!
- ❖ Be respectful to EVERYONE!
- ❖ Be responsible!
- ❖ Be present!
- ❖ Be your best you!

### Materials

- ❖ SpringBoard
- ❖ Composition Notebook
- ❖ Pencils/Pens/Colored Pencils/Highlighters/Markers
- ❖ Post-it notes (not the super sticky ones)
- ❖ Silent Reading Book



## Grading

### What's in a grade?

Reading and Language Arts have the following Categories: Summative Assessments, Formative/In-class Practice, and Skills/Understanding Practice. Your grade will be a combination of the following:

- ❖ Tests/Quizzes
- ❖ Projects (Reading and Writing)
- ❖ Independent Practice
- ❖ In Class Assignments
- ❖ Participation
- ❖ Essays

**AERIES** is the place I record grades. Do **Not** rely on Google Classroom.

## Assignments

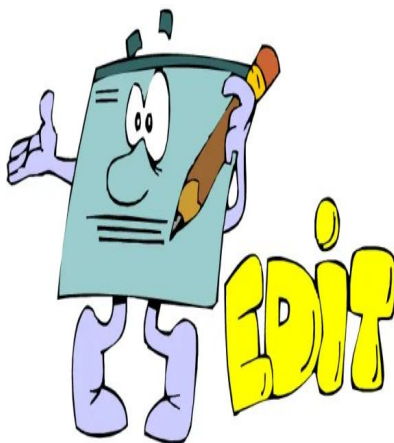
Students can expect nightly work - if students apply themselves in class then all they need to do is finish up. 15 minutes per night Monday through Thursday is allotted by the District, so students can also use this time to work ahead on a draft or study for the Friday assessment. **(Waiting to the last minute to complete a project or writing piece will more than likely result in excessive homework time and/or poor grade).**

### Late Work

If work is not completed prior to the Friday assessment - students have until the following Monday to submit the completed work for partial credit. After that the District 2 Day Late Policy applies resulting in a zero.

# Grading Scale

100 - 92.45%	= A
92.44 - 89.45%	= A-
89.44 - 87.45%	= B+
87.44 - 82.45%	= B
82.44 - 79.45%	= B-
79.44 - 77.45%	= C+
77.44 - 72.45%	= C
72.44 - 69.45%	= C-
69.44 - 67.45%	= D+
67.44 - 62.45%	= D
62.44 - 59.45%	= D-
59.44 - 0	= F



# Possible Texts

We will be using the adopted curriculum, SpringBoard, along with texts from *CommonLit*. Other supporting materials and novels will be used. Novels may include...

- ❖ *Day of Tears*
- ❖ *Hunger Games*
- ❖ *Night*
- ❖ *Hit and Run*
- ❖ *Fahrenheit 451*



# Possible Projects

- ❖ Comic Strips
- ❖ Compare and Contrast Paper
- ❖ Creative Writing
- ❖ Newsletter
- ❖ Novel Essays
- ❖ Opinion Paper
- ❖ Personal Narratives
- ❖ Poetry
- ❖ Book Review
- ❖ Argumentation Paper



# Reminders

## Cheating & Plagiarism

Just don't do it. If it is discovered that a student used someone else's work as their own, they will earn an automatic zero for that assignment, no matter how small it may be.

## Grading Categories/Percentages

### Reading & ELA

- Summative Assessments- 50%
- Formative/In-Class Practice- 40%
- Skills/Understanding Practice- 10%

**Total - 100%**

## Absences

If students are absent, it is their responsibility to find out what they missed and make up all assignments, quizzes, or tests. Assignments can be acquired by accessing google classroom, contacting the teacher, or a fellow classmate. Students should also reach out to me for any clarifications they may need.

## Office Hours

I am available before school, during lunch, and after school. Arrangements need to be made when meeting before or after school.

# Questions

If students or parents have any questions regarding assignments or expectations, I am available for clarification. Email or call and I will respond as soon as I can. Please be patient as I may need to gather information before returning messages or may have previously scheduled meetings that prevent me from responding the same day.